



601 W Polk, Chicago

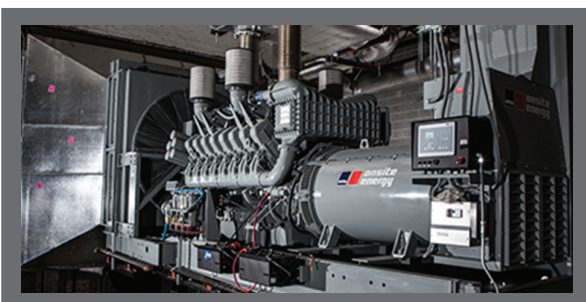
Engineered by industry experts, this datacenter was created for building scalable solutions. Located within the Metro Service Area and Financial Exchanges, we take advantage of Chicago's architecture as well as a direct connection to the city's primary fiber optic ring.

Our engineers have designed solutions that met complex power, space, and cooling challenges. Using facilities built with redundancy and flexibility in mind, our solution engineers can help choose the right Cabinet, Cage, or Suite set-up to meet your needs.

Datacenter Highlights



- SSAE 16 Type II Compliant
- 24/7 On-site SysAdmins
- Carrier flexibility
- N+1 Design
- Built to Tier III Standards
- 36" raised floor
- 18+' of ceiling height



- UPS: (4) Powerware 500kVA
- Multiple Power Grids
- Generator Backup
- Capacity: 3.5 MW
- Fuel: 8000 gallons-diesel
- VRLA Battery- 15 min. at full load

Facility

Space

- 25,000 sq. feet of 36" raised floor
- 18' ceiling height
- Largest contiguous space in downtown Chicago

Security

- HID proximity card access
- Biometric & keypad access control
- Guard Presence
- Multiple mantraps
- 24/7 camera monitoring & recording
- CCTV with 90 days retention

Network

- Internal Cabling- Cat6//6e for gigabit Ethernet, single-mode, and multi-mode fiber, overhead cable trays
- Chicago's primary fiber optic ring provides low latency access to major datacenters and exchanges

Utilities

AC Power

- (4) Powerware 500KVA UPS
- N+1 Redundancy
- Harmonic Filters
- VRLA Battery
- 15 minute battery life at full load
- Generation Capacity: 3.5 MW
- Generator fuel: 8000 gallons (diesel)
- Remotely Monitored

HVAC

- Capacity: 900 Tons
- Cooling type: air cooled chiller, DX systems, packaged glycol
- N+1 Redundancy
- Heating type: Electric
- Humidification: Yes
- Remotely Monitored

Fire Suppression

- Pre-action, dry pipe, double interlock fire protection
- 4 Zones
- Smoke / heat detection
- Subfloor detection
- Floor fire protection
- Remotely Monitored

Carrier Flexibility

By using a carrier-neutral facility, customers can maximize network performance while reducing costs.

Network Carriers

